



# Nintendo Game Boy Advance SP Buttons Replacement

Disassembly of Game Boy Advance SP, minus the display.

Written By: abeleko



---

## INTRODUCTION

This guide will show how to effectively disassemble the Game boy advance SP and gain access to the logic board, all the buttons (trigger buttons a common problem), the battery, and the speaker.

---

### TOOLS:

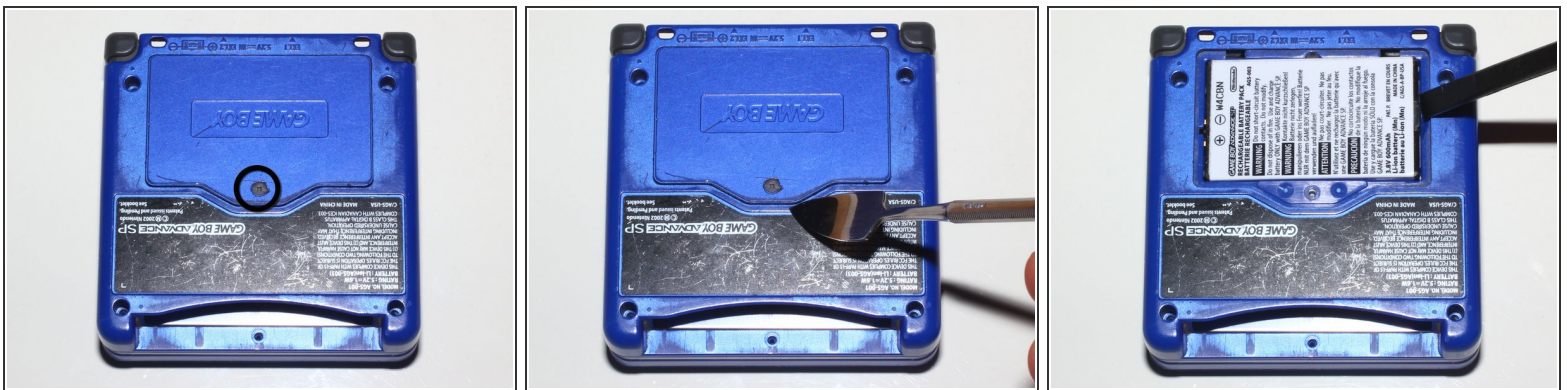
- [Metal Spudger](#) (1)
  - [Phillips #000 Screwdriver](#) (1)
  - [Phillips #1 Screwdriver](#) (1)
  - [Tri-wing Screwdriver](#) (1)
-

## Step 1 — Buttons



- Game Boy Advance SP (Nintendo 2002)

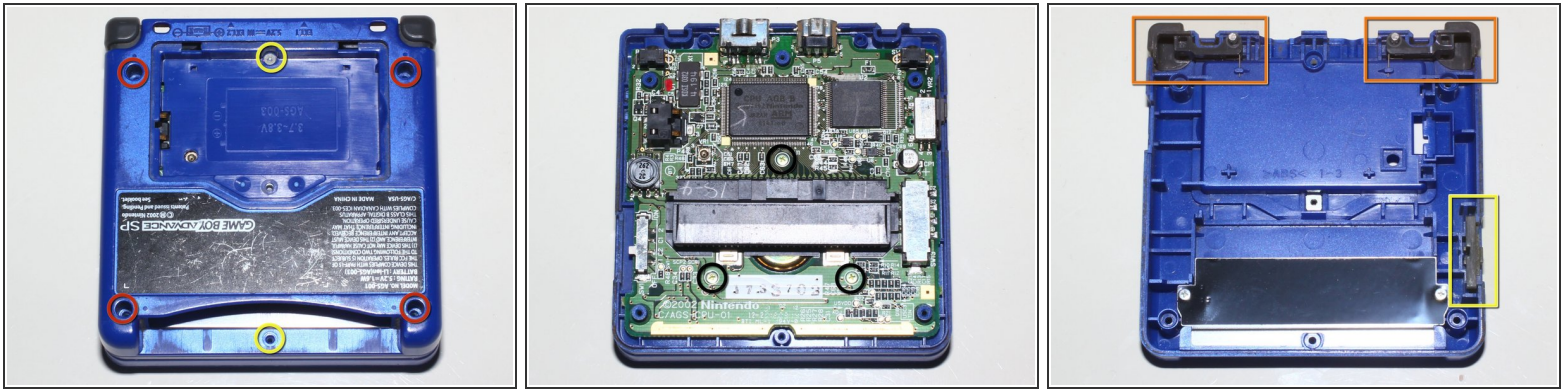
## Step 2



- Using a Phillips 000 driver, loosen the screw securing the battery compartment.
- Using a metal spudger, gently lift the battery compartment by placing the edge just under the screw. The screw will come off with the cover as it has a washer holding it in place.
- Remove battery using a plastic spudger or fingernail.

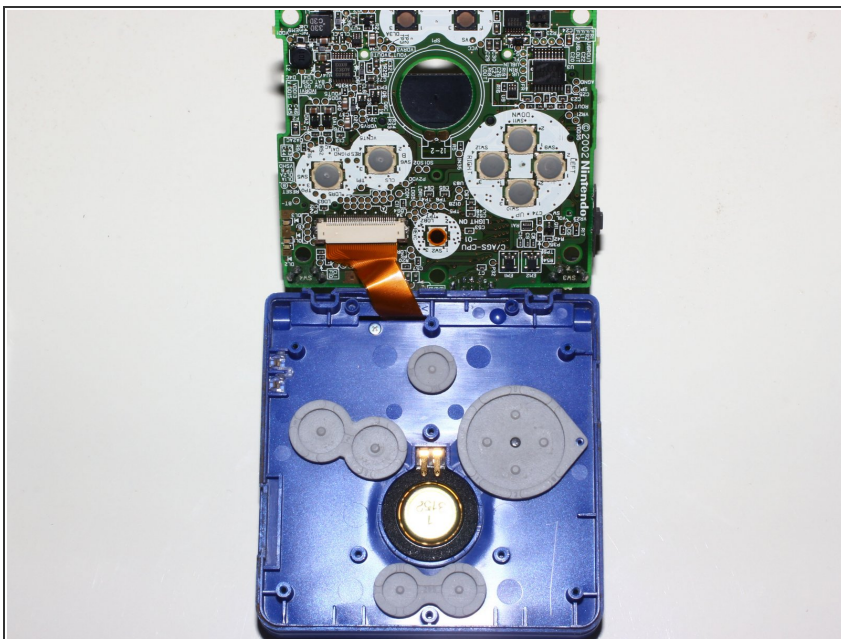


## Step 3



- Back cover contains 4 Gold Tri-Wing #0 screws (Red circle), and 2 Silver Tri-Wing #0 Screws (Yellow circle).
- Remove screws and lift back cover off giving access to motherboard.
- Motherboard is secured by 3 Phillips #0 screws.
- Triggers L&R (Orange box), and Power Switch Piece (Yellow box) are found affixed to the rear cover.

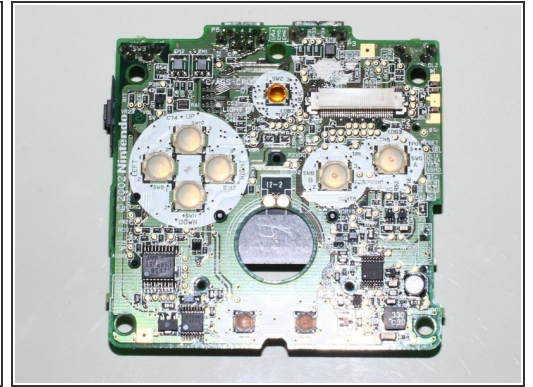
## Step 4




⚠ Flip the motherboard over very carefully as not to damage the display ribbon.

- You now have access to the device speaker and buttons.

## Step 5



 Carefully using fingers, detach display ribbon from its socket. This ribbon is especially hard to remove due to the angle in which you'll need to remove it.

- You can now access the motherboard and the input buttons freely.

To reassemble your device, follow these instructions in reverse order.